

676 1/2 Cherry Street, Area Outlined in Red

**CHERRY STREET (FIELD
CLAY STREET (PLAT))**
(40' PUBLIC R/W PER PLAT)

EXHIBIT "A"

NG TO

ASPHALT

ASPHALT
EDGE OF PAVEMENT

ASPHALT
DRIVE

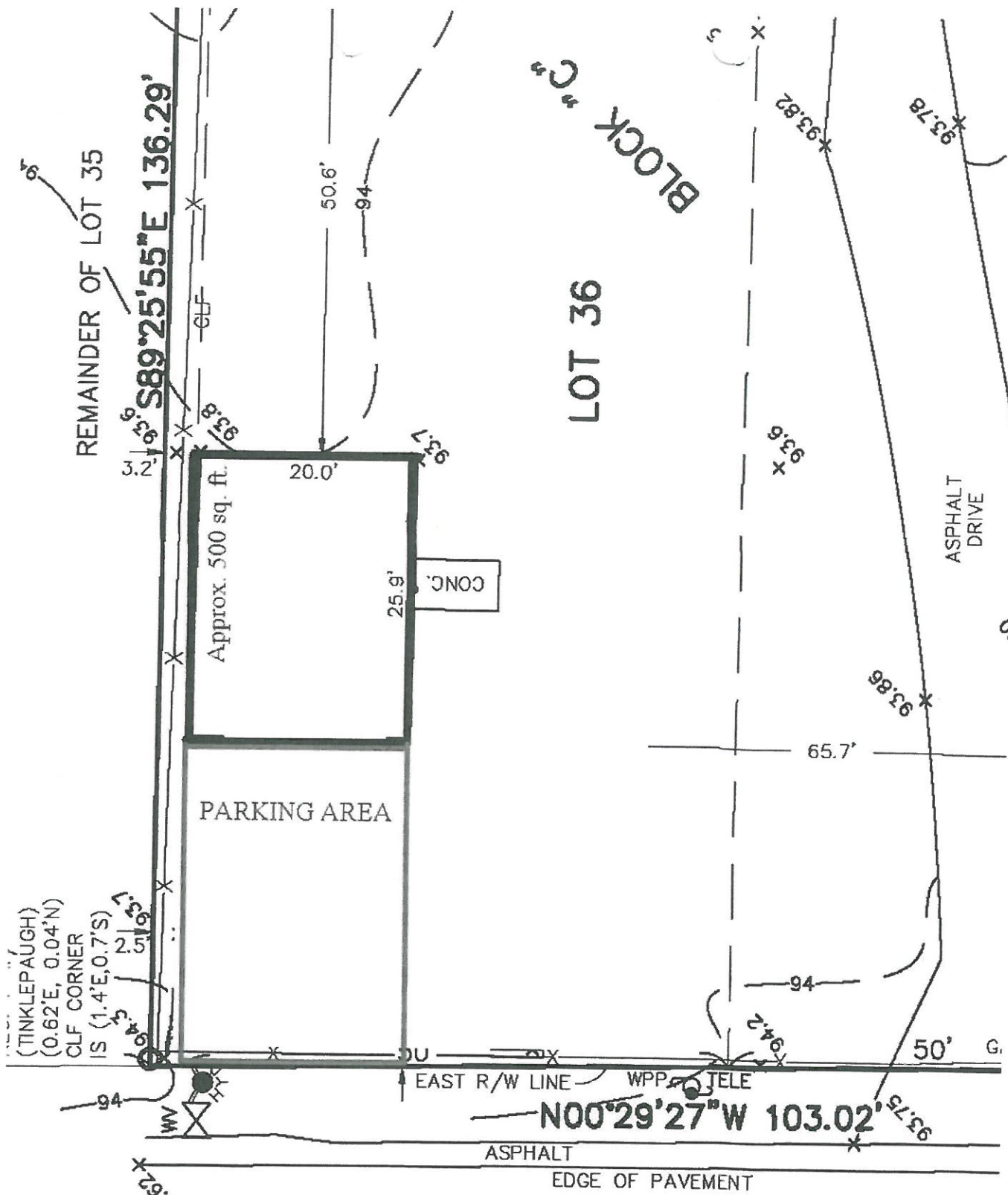
LOT 36

BLOCK "C"

REMAINDER OF LOT 35

43.8' Approx. 500 sq. ft.
ORY CB &
DD FRAME
SIDENCE
E: 94.08'
CONC.

(TINKLEPAUGH)
(0.62'E, 0.04'N)
CLF CORNER
IS (1.4'E, 0.7'S)



676 1/2 Cherry Street, Area Outlined in Red
**CHERRY STREET (FIELD
 CLAY STREET (PLAT)**
 (40' PUBLIC R/W PER PLAT)

EXHIBIT "B"

VG TO